

# C-U (Carbon-Uranium)

H. Okamoto

The C-U phase diagram in [Massalski2] was redrawn from [1967Sto] and [1969Ben]. Figure 1 shows the C-U phase diagram calculated by [2001Che]. This diagram is supported by experimental phase boundary data available in numerous (more than 10) reports, including [1967Sto] and [1979Ben].

## References

- 1967Sto:** E.K. Storms, *The Refractory Carbides*, Academic Press, 1967  
**1969Ben:** R. Benz, C.G. Hoffman, and G.N. Rupert, UC-UC<sub>2</sub> Phase Boundaries, *High Temp. Sci.*, Vol 1, 1969, 342-359  
**2001Che:** P.Y. Chevalier and E. Fischer, Thermodynamic Modeling of the C-U and B-U Binary Systems, *J. Nucl. Mater.*, Vol 288, 2001, p 100-129

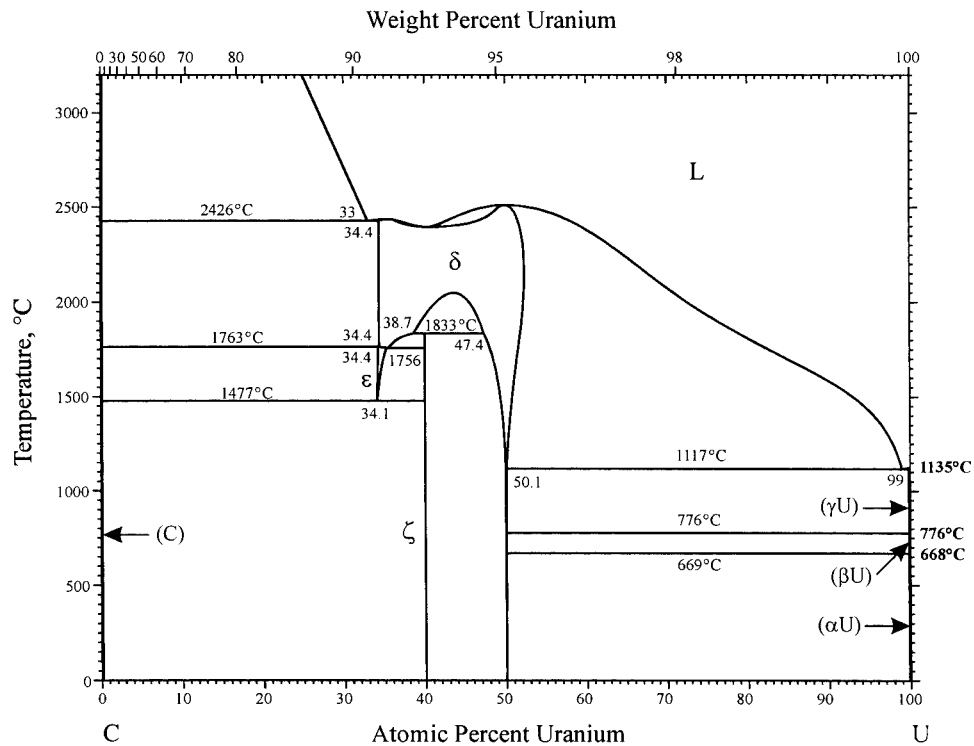


Fig. 1 C-U phase diagram